

We hope this information has been helpful and you are ready for an adventure with your students. Please don't hesitate to ask if you need any more information in order to make your experience the most it can be.

Thank you again for being willing to give up your time to bring these memories to the children of your community.

Thank you  
The Tremont Staff

**Notes:**



Great Smoky Mountains  
National Park

9275 Tremont Road  
Townsend, TN 37882

mail@gsmit.org  
www.gsmit.org

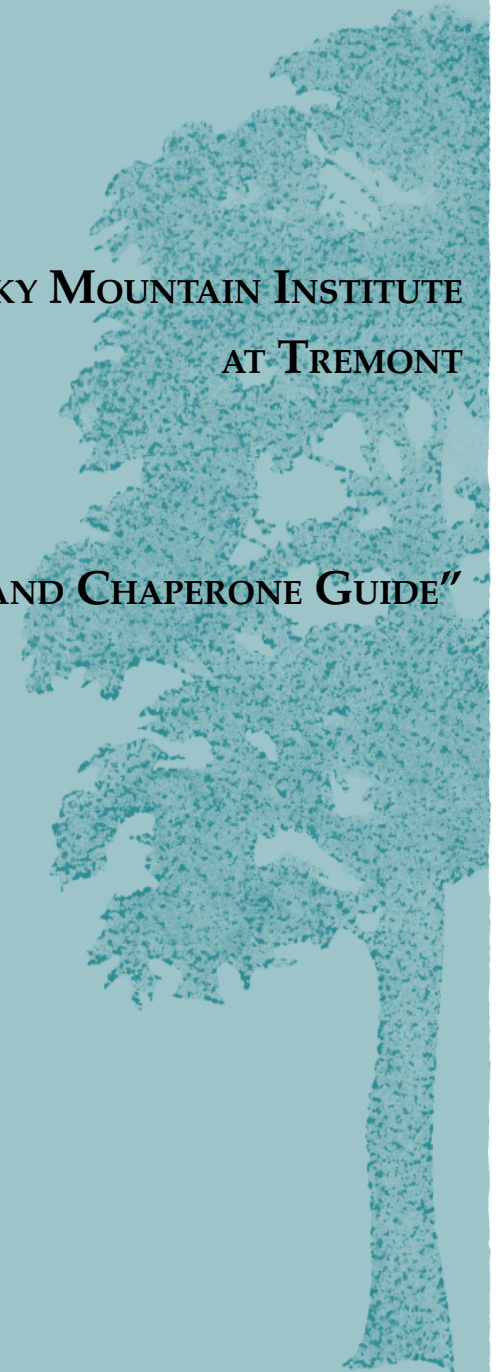
(865) 448-6709  
(865) 448-9040  
(865) 448-9250 fax



*Connecting People and Nature*

**GREAT SMOKY MOUNTAIN INSTITUTE  
AT TREMONT**

**"TEACHER AND CHAPERONE GUIDE"**



“We should so live and labor in our time that what came to us as seed may go to the next generation as blossom, and what comes to us as blossom may go to them as fruit. This is what we mean by progress.”

-Henry Ward Beecher

## Helpful Hints for Teaching at Tremont

Some suggestions that will help you on the trail to ensure the health, safety and comfort of your group and allow them to enjoy the beauty of the mountains, forests and streams.

### **DO...**

- ..discuss the lesson and map with Tremont faculty including times, distances and meeting locations for conclusion.
- ..know how to orient and the scale of your map.
- ..carry along a first aid kit either from home or borrow a Tremont kit
- ..make certain of any trail junctions and consult the map during the hike.
- .. remind students to drink plenty of water.
- ..relate lessons to subjects covered in school and their home community.
- ..approach the lesson with enthusiasm and interest!
- ..encourage students to ask questions and be attentive to what they are seeing. You are welcome to use the Tremont library or ask staff when you return if the students have unanswered questions.

### **DON'T...**

- ..go off trail to find your way.
- ..keep going if you are ever confused about the trail. Just turn around and retrace your steps.
- ..change your trail without alerting Tremont staff
- ..be afraid to say “I don’t know” when leading a lesson. Use this instead as a time to challenge the students to seek out answers upon their return to campus.

The Smokies are an amazingly diverse place and you and your students will (and should) encounter questions that you don’t know the answer to while out on the trail. Tell them what you do know and encourage them to fill in the blanks by asking questions and consulting Tremont faculty, books and other resources.

## “A Guide to Teaching on the Trail”

Cooperative teaching is one of the hallmarks of Tremont. We believe the best Tremont experience for the students comes from learning from us as well as from the adults from their home community. As a visiting adult (teacher or parent), you may not be an expert on the Smokies, yet you will be better able to relate the students' experience at Tremont with their own life experience back home. The partnerships formed between Tremont, the school and the community provide for the very best education for your students and the most retention of the knowledge and experience.

### **Preparing for teaching**

Your lead teacher will alert you to your teaching duties prior to your trip to Tremont. Please see him/her for a copy of the lesson plan or an explanation of the activities. Read over the lesson and familiarize yourself with the flow of the activities. Most lessons contain more activities than you will have time to complete during the lesson, so think ahead to what will be cut out if time runs short.

Once you arrive, all teaching materials will be provided including a laminated copy of lesson plans and any cards or worksheets needed. You will be provided a trail map and explanations of trailhead locations. If you are unsure about any trails, please don't hesitate to ask a Tremont staff for an explanation. All trails are well marked and easy to follow. Most classes will begin with a large group (20-24 students) and an introduction by a Tremont Teacher/Naturalist. The group will then split into two smaller groups, one lead by you and the other by Tremont faculty. If time allows, the groups may gather at the end of class for a large group conclusion.

If your school has chosen the Cooperation Course during your stay, you will be provided an activity sheet during our initial orientation meeting. All activities are short and very easy to follow.

*Great Smoky Mountains Institute at*



**TREMONT**  
*connecting people  
and nature...*

Dear Friends,

Welcome to the Tremont family! We would like to say a very big thank you for your willingness to give up the comforts of home in order to make this a memorable experience for your group.

This booklet was put together with you in mind in order to help you as an adult leader with your group. We hope its information, ideas, thoughts and suggestions will be useful to you during your stay. Your participation, enthusiasm, and caring concern for the students is, in no small way, a crucial part of the success of the experience here at Tremont.

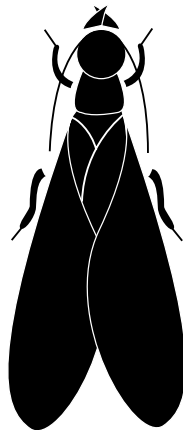
Thank you for your involvement in our program. If you have any questions, concerns, or suggestions, please don't hesitate to call on us.

Jennifer Arnold                      &                      The Tremont Staff  
School Program Director



## Who we are...

Tremont, located within Great Smoky Mountains National Park, in Walker Valley, has seen many different visitors and uses throughout the years. Since Will and Nancy Caylor Walker settled in the valley in 1859, it has been home to farms, families, loggers, Girl Scouts and Jobs Corp workers. In 1969, through the efforts of retired school teacher Elsie Burrell, Tremont began “connecting people and nature” in the National Park, as an environmental learning center. Tremont was operated by Maryville College in its early years and later managed by the Great Smoky Mountains Natural History Association. In 2001, Tremont became independent and now operates as a separate non-profit park partner. We maintain a close working relationship with the National Park Service, but are not a government funded center.



## Weaving our Message:

*Connecting people and nature.* This is the phrase we have used to frame what we believe the Tremont experience is about. Our stated mission is: “...to provide programs that will increase the awareness, appreciation, and understanding of the natural and cultural resources of the Great Smoky Mountains National Park and promote appropriate stewardship of these resources.” The three strands, **Sense of Place**, **Diversity** and **Stewardship**, are the threads that weave through each lesson and program we offer.

## Life in the Dorm

Have a meeting on the first day outlining your expectations.

Food, drinks, gum or candy are NOT permitted in the dorm. They lead to insect and rodent problems quickly!

Students should never be in the dorm unsupervised and running or jumping on beds is not permitted.

Remember to help us conserve water and electricity. Turn off lights when not in use and keep doors closed.

At the end of the day, have a meeting with your group in the dorm. Talk over the day’s events and review the time schedule for showers, journals, lights out, etc.

Quiet time before bed is an excellent time for children to write in their journals.

Homesickness is a normal part of developing independence. If it is affecting a student’s experience, try redirecting their thoughts toward a discussion of the day or a story. Avoid having the student call home if possible.

Pillow fights and roughhousing in the dorm should be avoided.

If someone is causing problems, let them know it is unfair to others who need their rest. Have them bring their sleeping bag to your area of the dorm.

If there is time, read or tell the group a story. Story books are available in the Tremont library.

Be aware that it is Tremont policy that no adult ever be alone with one child.

The last morning, the group is responsible for clean-up of the dorm. Supplies and procedures will be provided.

Respect others. While at Tremont we are a community working and living together. Challenge the students to think about how they can make others experience an enjoyable one.

## Chaperone Duties and Responsibilities

### *Arrival day*

Help students settle into the dorm and find their way to the first meeting site (usually the dining hall). Make certain as students are settling in that there is NO food or candy left in the dorm. Food may be kept in sealed containers in the dining hall.

Attend the orientation meeting.

If your school has chosen the Cooperation Course, all visiting adults will be asked to lead an activity. Activity cards are provided during our initial orientation and are very easy to read and follow. The goal is to have students get to know each other, adults (parents or teachers) and National Park issues and stories better. Each activity takes approximately 15-20 minutes.

Assist students with arriving on time and finding meeting locations.

Supervise students during any off-class time. It is Tremont policy that no student be unsupervised while on site including dorm, dining hall and gift shop.

### *During your stay*

If you are expected to teach classes, please see the 'Teaching Guide' (next page) for additional hints. Check with your lead teacher about class assignments.

During classes, add into discussions with your own experiences and any connections to your home community such as different habitat types, river systems and land use (parks, refuges nearby) etc.

Assist Tremont Teacher/Naturalist with any minor discipline issues. Standing by a student often reminds them to focus energy back into the class discussion. Any help you give will be appreciated.

Assist students in being prepared for classes and activities with water bottles, appropriate clothing, shoes, rain gear and journals.

Supervise free time from 4:30-5:15pm.

Share any questions or concerns with the Tremont staff.

Alert the Tremont staff if you need to leave Tremont.

Fill out an evaluation form before departure.

Model enthusiasm and participation. Children key into your attitude and interest during lessons and other activities.

## SENSE OF PLACE

- Great Smoky Mountains National Park is a unique and inspiring place.
- Getting to know a place helps us to appreciate it and that should lead us to want to care for it.
- Wild places like the Smokies are important to the health of our planet.
- Individually and as a whole, people are a part of the web of life, affecting and being affected by other living things
- Each of us is a part of our "home" ecosystem. These same "sense of place" attitudes should be transferred to our home ecosystem.

## DIVERSITY

- There is tremendous biodiversity within Great Smoky Mountains National Park.
- The Smokies are and have been affected by people of diverse interests and perspectives.
- We can learn much about ourselves by living in community with people of diverse backgrounds, philosophies, and cultures.
- Diversity within plant, animal, and human communities makes them strong.

## STEWARDSHIP

- We have a responsibility for preserving and caring for the Smokies and places like it.
- Preserving places like the Smokies means learning about its problems and working to help.
- Our lifestyle and daily habits can be adjusted to have minimal impact upon the environment.

## HOW TO GET HERE

**FROM THE NORTH:** I-75 S to Knoxville. Continue on 275/ I-40 W for a short distance. Follow airport exits to 129 S. which takes you toward Alcoa/Maryville. From Maryville, take 321 N to Townsend. Once in Townsend, do not turn toward Pigeon Forge. Go straight and follow signs into the Cades Cove entrance to Great Smoky Mountains National Park. Once in the park . . .

**FROM THE SOUTH:** From Atlanta take I-75 N to Lenoir City - exit #81. Follow 321 N through Maryville to Townsend. Once in Townsend, do not turn toward Pigeon Forge. Go straight and follow signs into the Cades Cove entrance to Great Smoky Mountains National Park. Once in the park . . .

**FROM THE WEST:** Follow I-40 E to the Lenoir City exit #364. Follow route 321 N through Lenoir City into Maryville and on into Townsend. Once in Townsend, do not turn toward Pigeon Forge. Go straight and follow signs into the Cades Cove entrance to Great Smoky Mountains National Park. Once in the park . . .

**FROM THE EAST:** Follow I-40 W to the 411 S exit at Newport. Follow 411 S to Sevierville then 441 S to Pigeon Forge. Once in Pigeon Forge turn right and follow 321 S through Wears Valley to Townsend. Turn left in Townsend and follow Hwy. 73 into Great Smoky Mountains National Park. Once in the park . . .

Another option from the EAST is to reach the Park by the Foothills Parkway exit #443 from I-40W. The route is scenic but winding. Follow the Foothills Parkway to its intersection with route 321, take a left on 321. In Cosby take a right to stay on 321 and continue to Gatlinburg. In Gatlinburg take 411 S toward GSMNP. Once in the Park, at Sugarlands Visitor Center, turn right toward Townsend and Cades Cove. After about 18 miles, go past the Townsend entrance on your right and watch for signs for a left turn to Great Smoky Mountains Institute. Come two miles up the road and turn left.

**ONCE IN THE PARK:** When coming in from Townsend, follow the road to the Y-intersection with signs to Gatlinburg or Cades Cove. Turn right towards Cades Cove, then immediately you will see a sign indicating the road to the Great Smoky Mountains Institute. Turn left and follow the Tremont Road 2 miles to the Institute turning left across the 1-lane bridge. Office is on the left.

## Site and Facilities

The Tremont facilities are located along the Middle Prong of the Little River within Great Smoky Mountains National Park. They include:

**Caylor Lodge** is a comfortable air conditioned and heated two story dormitory. Each story of the dorm is divided into a right and left section, forming the four quadrants. Each quadrant contains a full bathroom facility including private showers, sinks and toilets. Please note that you may be sharing space with students from another school.

**Elsie Burrell Activity Center** is the focus of much of the activity. The activity center contains the dining hall, first aid room, meeting rooms and science room along with rest rooms. Meals served in the dining hall are family style and always contain a vegetarian alternative. Please alert Tremont for other dietary needs.

**Office/Visitor Center** houses our administrative offices as well as a gift shop and library. The gift shop contains books, field guide, T-shirts, hats as well as many other educational items. Hours for the gift shop are 8:00am - 5:00pm (M-F) (Saturday hours are 9:00am - 5:00pm, March through October.)

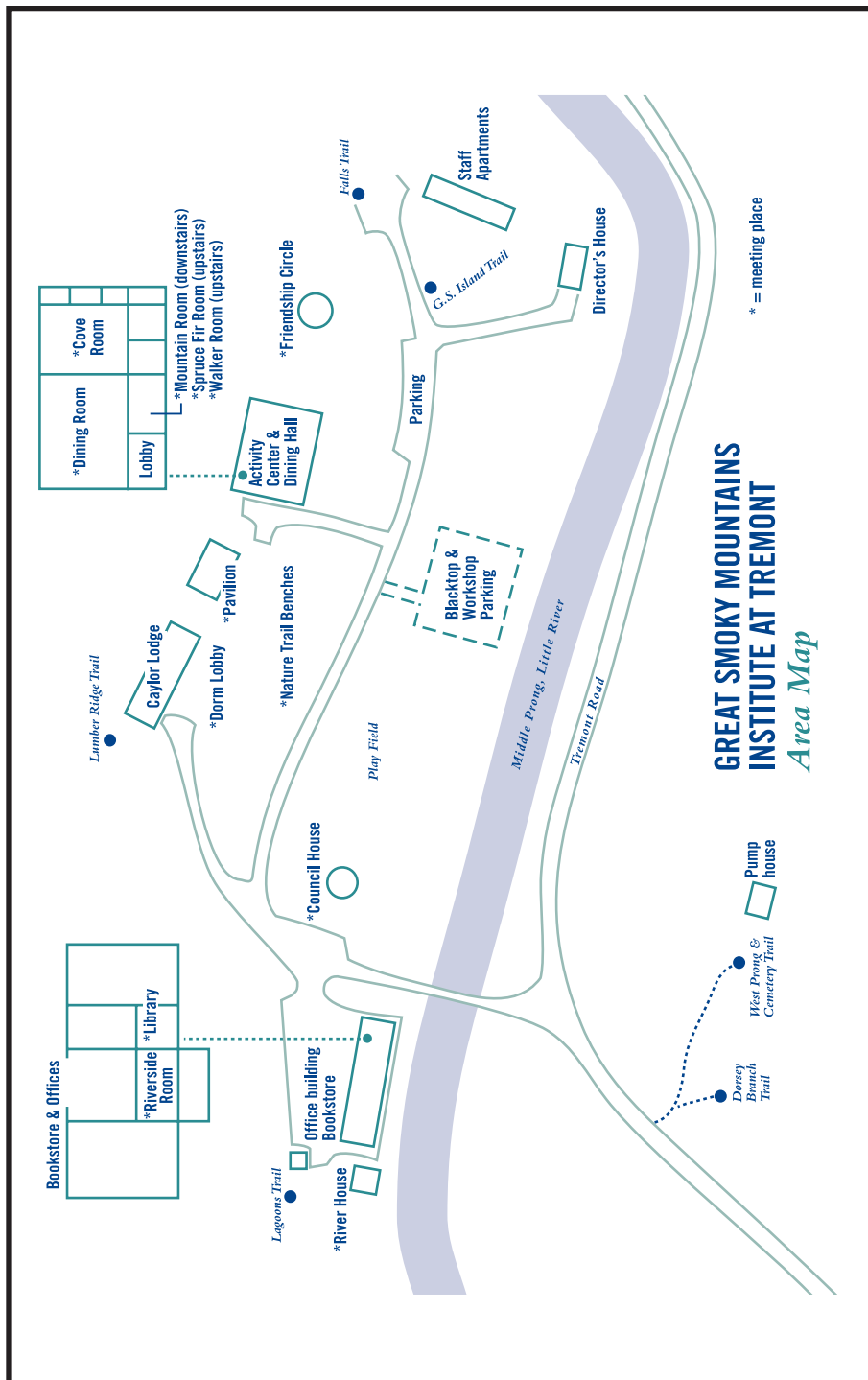
**Dorsey Field** provides plenty of open space for large group activities.

**Friendship Circle** and **Council House** are two open-air group meeting sites and campfire shelters.

**Smoky Pavilion** has cement floor, electrical outlets, lights and picnic tables for outside activities.

### Phone and Address Information

If someone from home needs to reach you, a message may be left at (865) 448-6709. After hours messages will be delivered the following day. For after hours emergencies, call the National Park at (865) 436-1294. E-mails may be sent to mail@gsmmit.org. A phone is available 24 hours in our Activity Center and requires a calling card or collect call for long distance. **Please note that cell phones do not get any reception on the Tremont campus.**



## What to Bring

You will be outside most of the time and should bring rugged clothes that can get dirty. Activities usually continue as planned regardless of the weather, so plan accordingly. Temperatures can drop at night and some activities will take place after dark outdoors. Other than basics of clothing that can get dirty, here are a few items you need to include.

- Bed linens (sleeping bag or sheets and a blanket)
- Pillow
- Towels and washcloths
- Toiletries (none are provided)
- Rain Gear (avoid thin plastic ponchos)
- Water bottle (with tight fitting lid)
- Comfortable sturdy shoes for hiking
- Old shoes for creek wading (closed toed shoes)
- Long sleeved shirts or fleece for layering in evening
- Flashlight
- Alarm Clock
- Day pack (large enough for lunch, rain gear, water bottle)

### Optional Items

- Camera
- Binoculars
- Field guides (we have some you can borrow also)
- Drinking cup (for use in dorm)
- Musical instruments
- Small bedside light for reading
- Games or favorite story for nighttime reading to students
- Flip flops or slippers for use in dorm and showers
- Notebook or journal
- Calling card for making long distance calls\*
- \*Cell phones do not get any reception on the Tremont campus.**

