



Wilderness First Responder
Presented by
Great Smoky Mountains Institute
Roane State Community College
SAMPLE SCHEDULE

Sunday, 1:00 PM – 8:00 PM

Faculty & Student Intros, the Paperwork Headache
Intro to EMS, Wildmed, & Their Integration
Legal, Ethical Issues of Pre-Hospital Care
First Responder Wellness
A&P Basics, How Do We Work?
The Big 3 Body Systems

Monday, 6:00 AM – 8:00 PM

Basic Life Support Review
Sizing Up the Scene
Initial Patient Assessment
Focused Assessment & Patient History
On-Going Assessment
Handing Off the Patient, SOAP or CHART

Tuesday, 6:00 AM – 8:00 PM

Airway Management, Skills Development
Trauma – Bone, Joint, & Soft Tissue Injuries
Burn Injury & the Burn Environment
Medical Emergencies
Scenarios & Drills

Written Evaluation #1, Take Home

Wednesday, 6:00 AM – 8:00 PM

Incident Command, SAR, Disaster Management, Triage
The Immune System & Anaphylaxis
Scorpions, Snakes, Spiders (the Venom Bunch)
Animal Bites, Zoonoses
Common Wilderness Diseases: Lyme, Rabies, Tetanus
Scenarios & Drills

Written Evaluation #2, Take Home

Thursday, 6:00 AM – 8:00 PM

The Little People – Childbirth, Infants, Kids in the Wilderness
Heat Problems – Heat Cramps, Heat Exhaustion, Heat Stroke
Cold Problems – Frostnip, Frostbite, Hypothermia

Too Much of a Good Thing – Drowning, Near-Drowning, CWI
Lightning Injury & Avoidance
Scenarios & Drills

Written Evaluation #3, Take Home

Friday, 6:00 AM – 10:00 PM

High Altitude Syndromes – AMS, HAPE, HACE, Periodic Breathing
Avalanche Medicine
Surviving the Elements
Scenarios & Drills

Night Exercise, the Scenario from Hell

Saturday, 6:00 AM – 8:00 PM

Student Improvisation Demonstration
Search & Rescue
Improvisation Scenarios & Drills

Final Scenario

Written Final Evaluation

Sunday, 9:00 AM – 3:30 PM

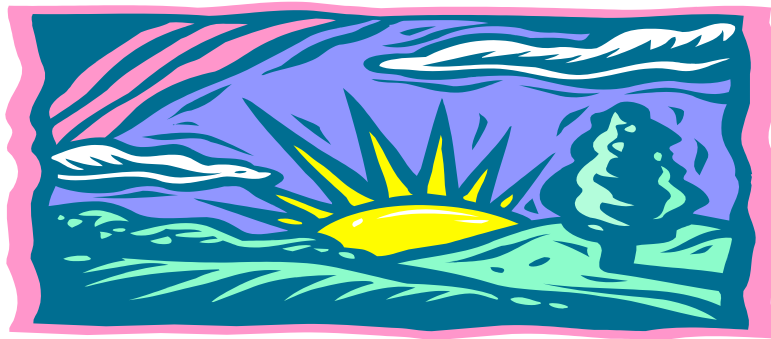
Clean Up

Tom Kessler's Trekkers' Advice
Wilderness Psychiatric Medicine, the Kansas Project, Empathy Drill

Final Practical

National Registry Exam Review

Course Evaluation



**Roane State Community College
Continuing Healthcare Education**

<http://www.roanestate.edu/che>

GREAT SMOKY MOUNTAINS INSTITUTE AT TREMONT

9275 Tremont Road, Townsend, TN 37882

Phone: 865-448-6709 Fax: 865-448-9250

www.gsmit.org ~ mail@gsmit.org