



**Wilderness First Responder Refresher**  
Roane State Community College  
Great Smoky Mountain Institute at Tremont  
**SAMPLE SCHEDULE**

**Friday, 12pm - 8pm**

Registration & Introductions

Personal Safety, Blood Borne Pathogens, Body Substance Isolation

Recertification for Basic Life Support (AHA Health Care Provider)

Review of the Patient Assessment System

**Saturday, 8am - 8pm**

Why Do People Die?

Airway Review

Immobilization Practices

The Medical Patient in the Wilderness

Emergency Childbirth

Things One Should Know About Kids

Heat & Cold review

The Immune System, Allergic Reaction, Anaphylaxis

Search & Rescue

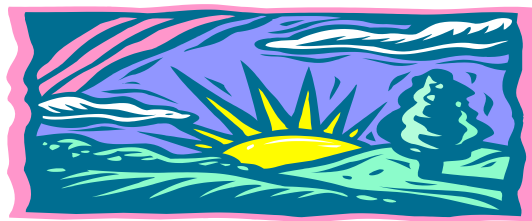
Scenarios

**Sunday, 8am - 3pm**

Improvisation

Scenarios

Wrap Up Unfinished Business



**Roane State Community College**  
**Continuing Healthcare Education**  
<http://www.roanestate.edu/che>

GREAT SMOKY MOUNTAINS INSTITUTE AT TREMONT  
9275 Tremont Road, Townsend, TN 37882  
Phone: 865-448-6709 Fax: 865-448-9250  
[www.gsmit.org](http://www.gsmit.org) ~ [mail@gsmit.org](mailto:mail@gsmit.org)